

PARKING DECKS: ALSAN TRAFIK Liquid Systems

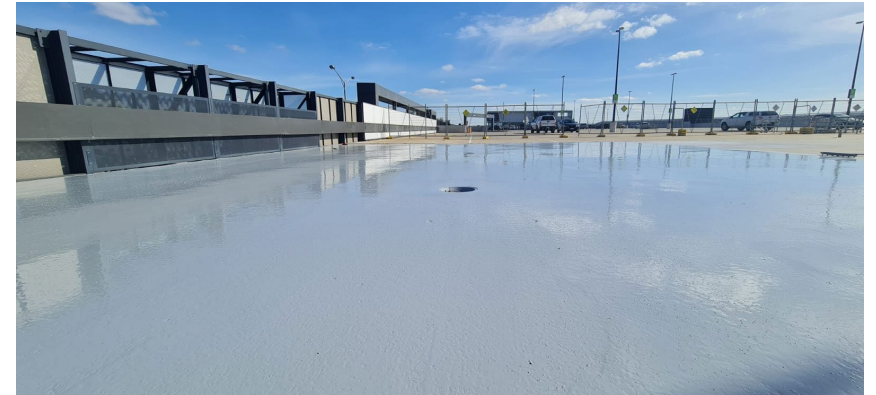
REFERENCES





WERRIBEE SHOPPING CENTRE

HOPPERS CROSSING, VIC (2023)
30,000 m²





PITTWATER PLACE SHOPPING CENTRE

MONA VALE, NSW (2023)
3,000 m²





BMW AND MINI CENTRE
RUSHCUTTER'S BAY, NSW (2019)
5,152 m²

WESTPOINT SHOPPING CENTRE

BLACKTOWN, NSW (2019)

23,000 m²





AUDI CENTRE
SYDNEY, NSW (2019)
2,320 m²



OTHER PROJECTS:

2022

- Castle Hill, NSW – 1,158 m²
- Mantra Hotel, NSW – 200 m²
- Maroochydore, QLD – 495 m²
- Clontarf, QLD – 350 m²
- Phillip, ACT – 195 m²

2021

- Maroochydore, QLD – 1,000 m²
- Smeaton Grange, NSW – 120 m²

2020

- Castle Hill, NSW – 1,288 m²
- Modbury SA – 544 m²
- Eight Mile Plains, QLD – 220 m²

2019

- Morayfield, QLD – 150 m²

2018

- Newstead, QLD – 155 m²
- Sydney, NSW – 350 m²
- Marrickville, NSW – 3,340 m²

2017

- Park View, Marrickville, NSW – 2,000 m²
- Clayfield, QLD – 750 m²
- Surfers Paradise, QLD – 420 m²

2012-2016

- Sydney Airport, NSW – 200 m²
- Banyule City Council, Greensborough, VIC – 2,500 m²
- West Perth, WA – 1,700 m²
- Gold Coast, QLD – 1,900 m²
- Cotton Tree, QLD – 500 m²
- Southport, QLD – 175 m²